



Science Advisory Board

# Update on Priorities for Weather Research (PWR)

**30 April 2021**

Brad Colman and Scott Glenn, EISWG Co-Chairs

# What we would like from you today....

---

- Your consideration and nominations for Team Members
- Advice on mini-symposia structure
- Thoughts on handling cross-cut foundational elements

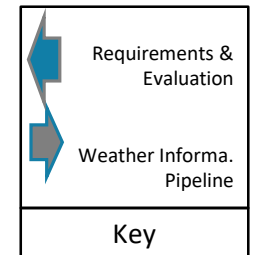
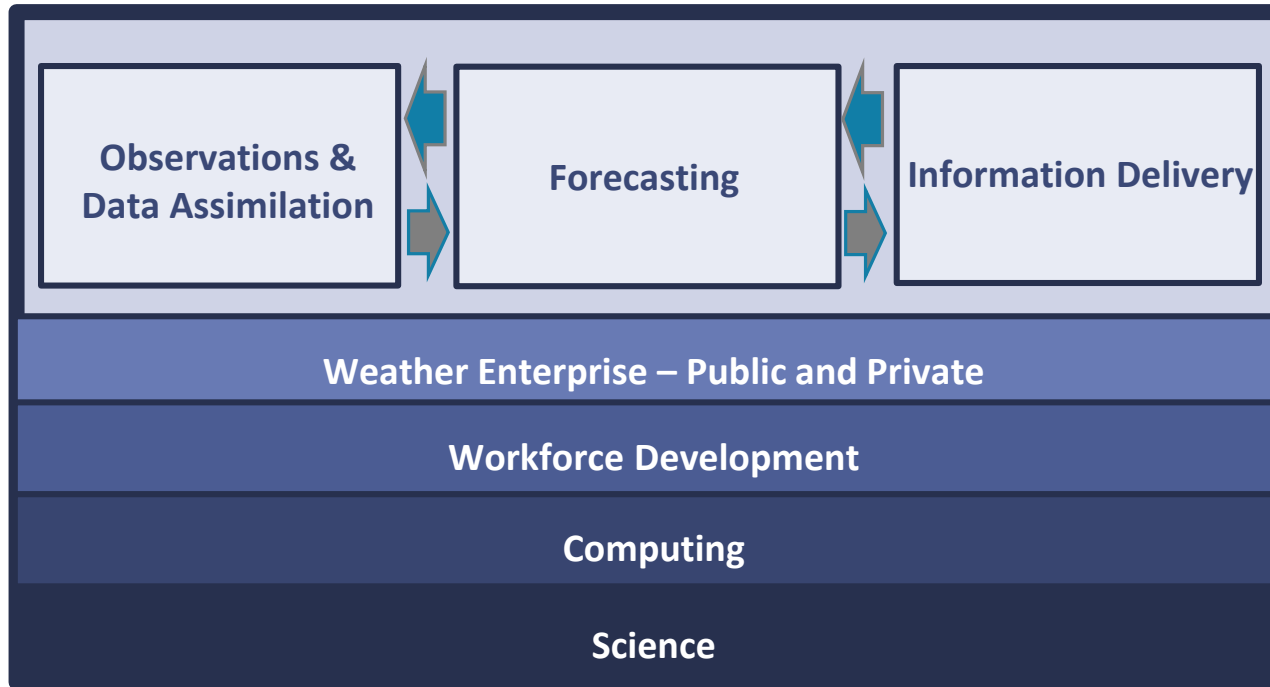
# PWR Study Schedule

---

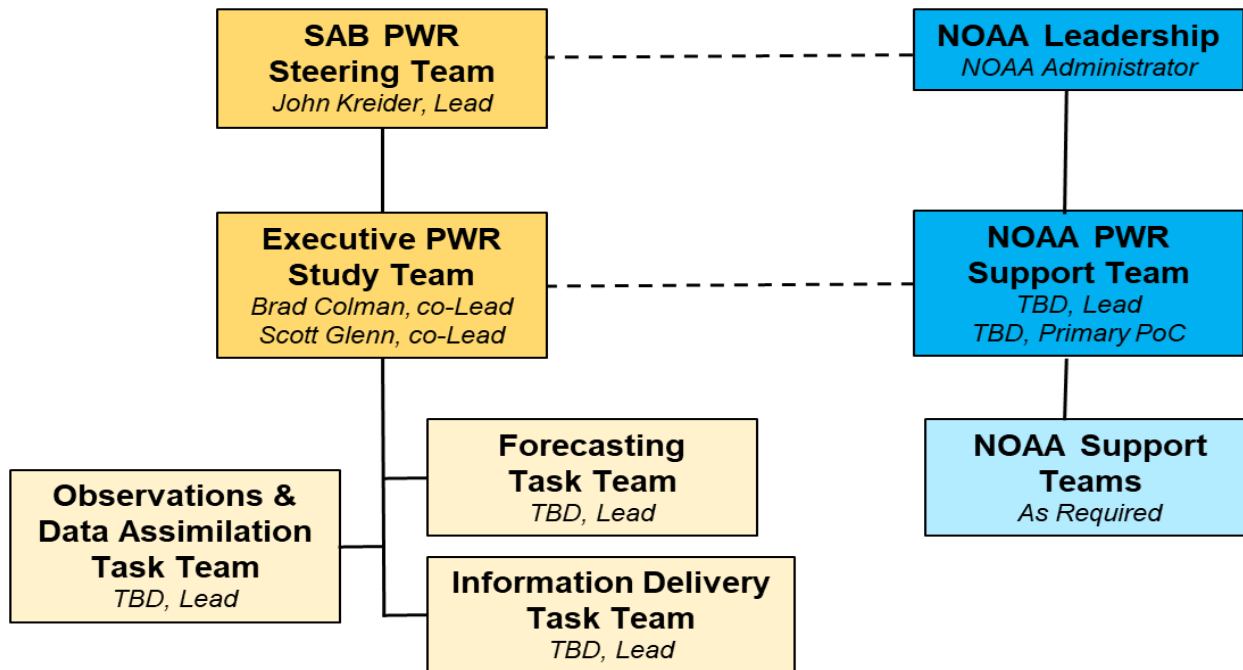
- **March: SAB Discussion and Approval of Charge to PWR Study Team**
- **April: Build out Teams (slow)**
- May: Finalize Task Teams; gather information and plan mini-symposia
- June: Task Teams hold mini-symposia and prepare summaries
- August: present extended report outline to SAB for review and course correction (as required)
- October: complete second draft report and submit to SAB
- November: Study Team addresses comments and revises report
- December SAB meeting to discuss and approve final report for submission to Congress

# Priorities for Weather Research (PWR) Investments

## Strategic Framework: 3 Pillars & Foundational Elements



# PWR Study Team Organization



# PWR Study Team Members

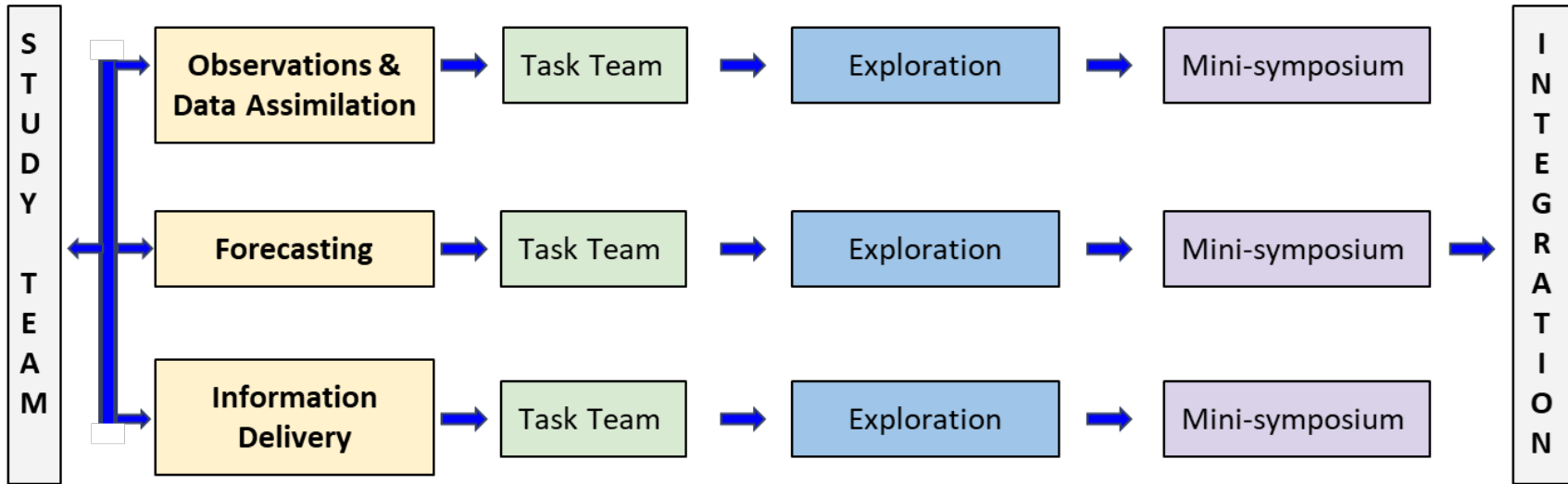
<b>Steering Team</b>	<b>Executive Study Team</b>	<b>NOAA Support Team</b>	<b>SAB Office Support</b>
John Kreider Everette Joseph Eugenia Kalnay	Brad Colman Scott Glenn Bill Gail Bill Hooke Bob Winokur Co-Chairs of Task Teams (six, as identified) Fred Carr Mike Eilts	John Cortinas (OAR) Jenn Mahoney (OAR) Steve Smith (NWS) Dave Helms (NESDIS) Carl Gouldman (NOS) Nate Mantua (NMFS) Wendy Lewis (OMAO)	Cynthia Decker Courtney Edwards Tiffany Atkinson

Finding homes for: Marshall Shepard, Julie Demuth, Jon Linker, May Yuan, Jon White, and others

A few asks in progress

Sources of names include: Executive Study Team, CWG, EISWG, and external contacts

# PWR Study Team Parallel Information Gathering Pipeline



# DRAFT objectives for the Mini-Symposia

---

- Build on the NOAA foundational data from the NOAA Support Team by targeting gaps and updates
- Primary source of information from an Enterprise perspective
- Provide a community forum to discuss innovative ideas, perspectives, & priority
- Subject Matter Expert (SME) material, along with mini-symposia summaries, will provide critical content for the overall report
- Topics covered should be limited to those deemed most relevant by the Task Teams and should NOT be comprehensive of all possible topics within that pillar
- Overall length - about ½ day?



# How to Handle Cross-cut and Foundational Elements

---

- Build a 4th team that has members from each Foundational Element
  - Team members float across Task Teams
- Identify Foundational Element Leads who work across Pillars
- Leverage EISWG members on an ad hoc basis to support alignment and cross cuts

# Report outline

---

**Title Page** (1 page)

**Charge from Omnibus Act** (1/2 page)

The assignment

**Executive Summary** (2 pages max)

Overview of Purpose and Crucial Importance of Effort (Scoping document, top of page 2).

Summary Findings & Recommendations:

1. Overarching Themes
2. Observations and Data Assimilation
3. Forecasting
4. Information Delivery
5. Foundational Elements

**Report Outline** (1/2 page)

**Context** (1 page)

Expanded purpose and urgency

**Scope** (1 page)

Defines landscape and boundaries of study (scoping document page 4 is start)

# Report outline

---

## **Strategic Framework (2 pages) - big picture description**

Three Pillars and Foundational Elements

(Figure 1 & descriptions on pages 2-3 of scoping document).

## **Overarching Themes**

Findings and Recommends (5 pages total)

## **Sections on each of the Pillars (7 pages each):**

Each includes relevant findings and recommendations

Section 1: Observations and Data Assimilation

Section 2: Forecasting

Section 3: Information Delivery

# Report outline

---

## **Section on the Foundational Elements** - (5 pages)

Includes relevant findings and recommendations

Science - Earth System, Social & Behavioral

Computing - HPC, Cloud, Cyberinfrastructure

Workforce Development - training & education, diversity, early engagement

Weather Enterprise - government, industry, academic

**Summary** (1 page)      (approximately 40 pages total)

=====

## **Appendices:**

- I. Study Approach (information we assemble or write)
  - a. Study Team Organization & Membership (Figure 2 from Scoping Document)
  - b. Parallel Information Gathering Pipeline (Figure 3 from Scoping Document)
  - c. Prioritization criteria
- II. NOAA information repository (links to reports and documents provided by NOAA)