



The NOAA Research Agenda: A Portfolio Logic

A Presentation to the
NOAA Science Advisory Board

Dr. Rick Spinrad
NOAA Chief Scientist

17 November 2014



A Research Agenda is:

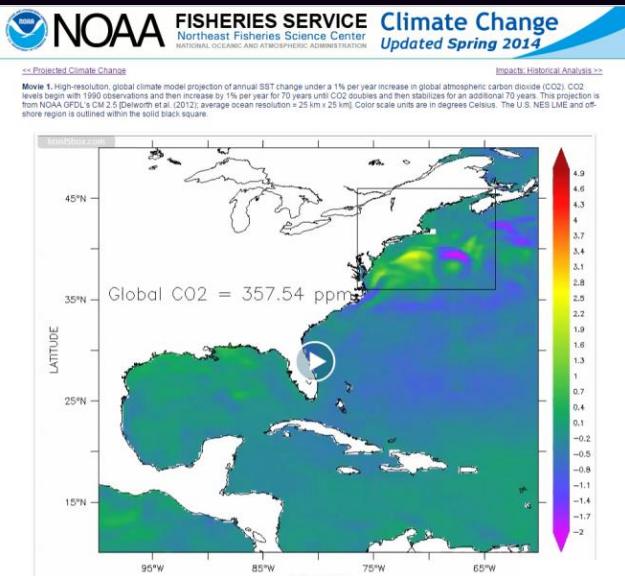
- *A logic model for guiding research to meet NOAA's mission needs and priorities*
 - *A basis for establishing and optimizing research investments (programs, personnel, infrastructure etc.)*
 - *A vehicle for assessing portfolio performance*
- ...today and in the future*



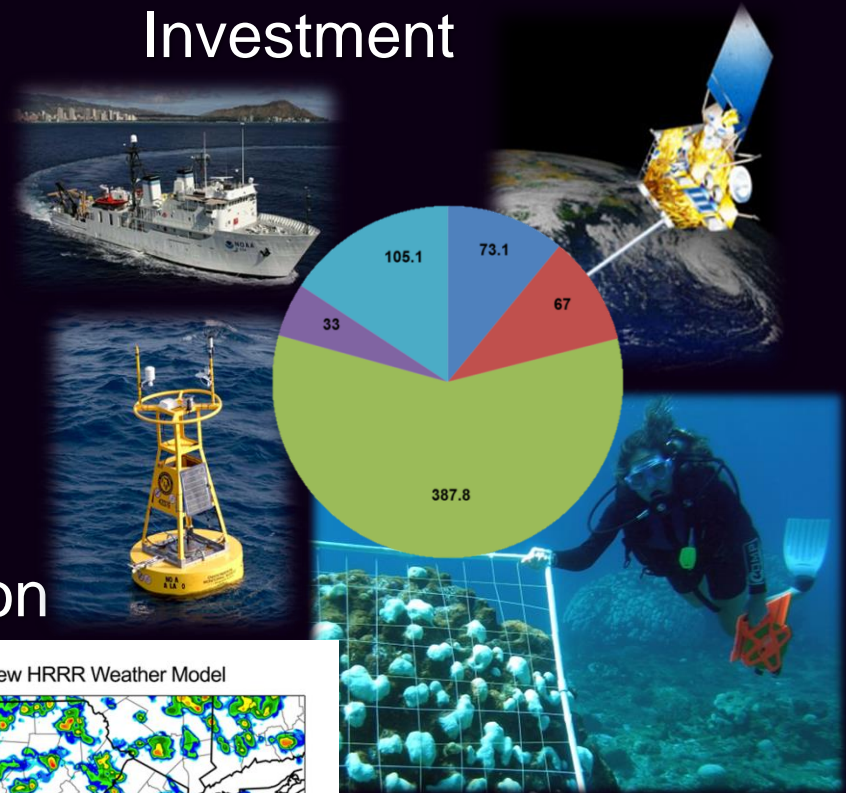
Increasing and institutionalizing the effectiveness of NOAA research.



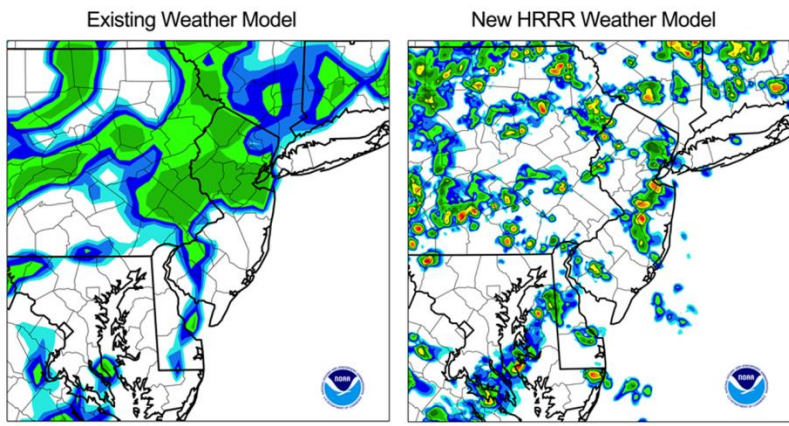
Collaboration



Investment



Transition



This is a comparison of two weather forecast models looking six hours ahead for the New Jersey area. Image on left shows the forecast which doesn't distinguish localized hazardous weather. Image on right shows the new HRRR (High-Resolution Rapid Refresh) model that clearly depicts where local thunderstorms (yellow and red coloring) are likely. (Credit: NOAA)



A Research Agenda should be:



Useful

Understandable to a broad array of stakeholders

Foundational

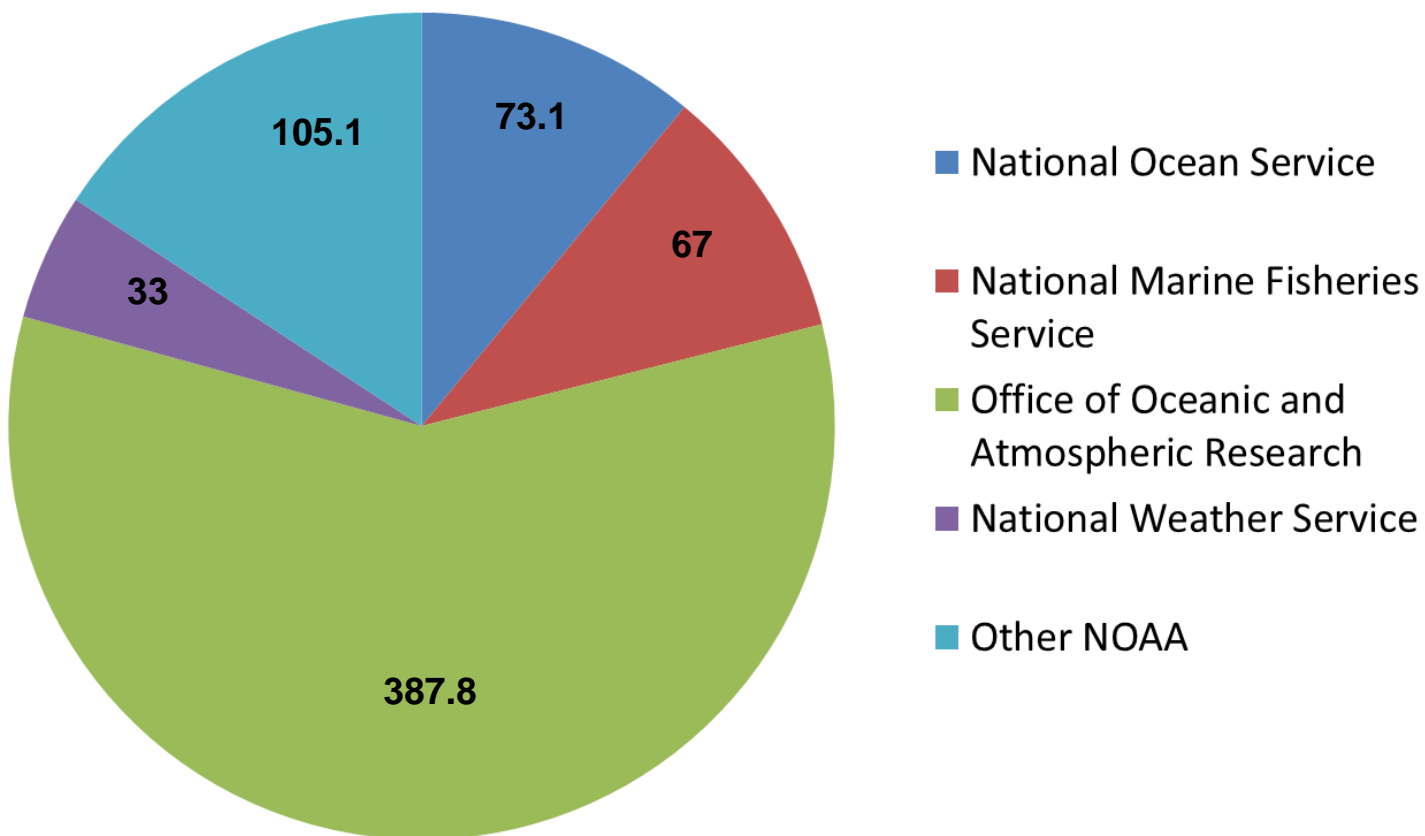
Integrated into strategic plans and implementation plans

Defensible



NOAA's R&D Portfolio

NOAA R&D Obligations in FY14 (in millions USD)





What is the Research Agenda?



*



**

*Image from University of Hawaii Department of Theatre and Dance

**Image staged; any semblance to real bureaucrat is unintentional and coincidental



What is the Research Agenda?

The core elements are:

- *Operational/guiding principles*
- *Portfolio of mission needs*
- *Capabilities*
- *Roles and responsibilities*
- *Accountability*



Operational/Guiding Principles

Mission Driven

**Management,
Planning, and
Accountability**

Innovation

Credibility

**Balanced in
Research
Spectrum**

**Partnership-
Based**

Capability

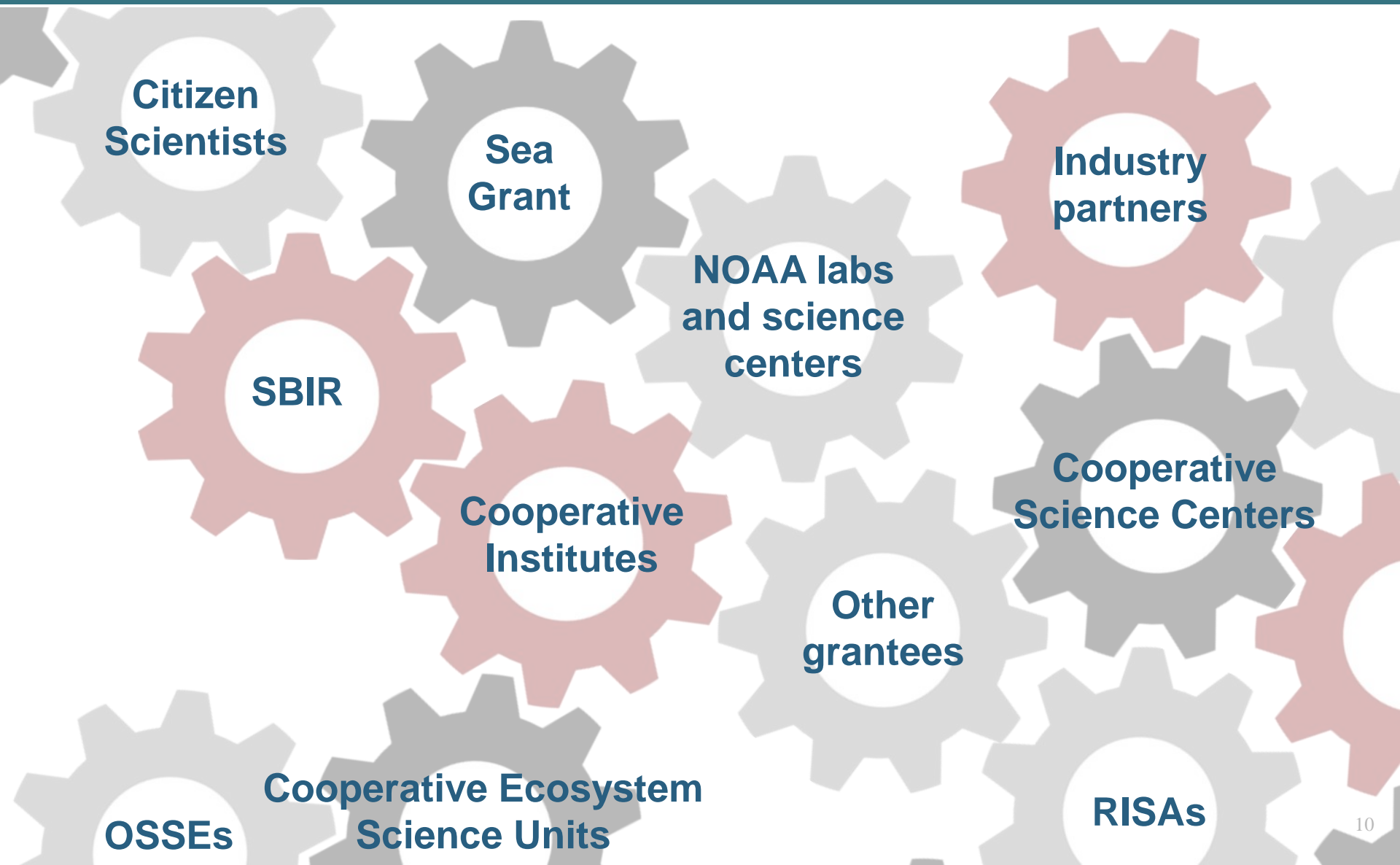


Portfolio of mission needs

- Research as a tool for meeting NOAA's mission(s) as a science-based services agency
- Develop a portfolio of mission needs such that research priorities are:
 - Transparent; traceable; adaptable; evaluated based on mission needs; corporate; and integrated with other priority-setting processes



Capabilities





Roles and Responsibilities

Program Managers

Line Office Transition Managers

Lab directors

Principal investigators

Office directors

Cross-NOAA team leads

Portfolio manager?





Accountability

To ensure:

- *Research is aligned with guiding principles of NOAA's research agenda*
- *Performance (using performance measures and other data) is monitored and objectively evaluated*
- *Decision points ("gates") are defined*
- *Decisions throughout: Continue – Accelerate – Redirect – Shelve*



How the Research Agenda will be used



Budget development

Execution

Investment priorities

*We are using developing concepts for the
Research Agenda to guide Research
Council input into prioritizing FY17
budget requests.*



Next steps (?)

- *External engagement*
- *Drafting by staff in the Office of the Chief Scientist*
- *Input from the SAB*



What we want from the SAB



- *Are we on the right path?*
- *Feedback on structure, focus and utility*
- *How should the Research Agenda be developed, used and promulgated?*